

# Rule 4



## The Players' Equipment

---

# TOPICS

---

- y Required equipment
  - y Non-dangerous equipment
  - y Illegal Equipment
  - y Uniforms / Colors
  - y Infringements
  - y Coaches' Responsibilities
-

# REQUIRED EQUIPMENT

---

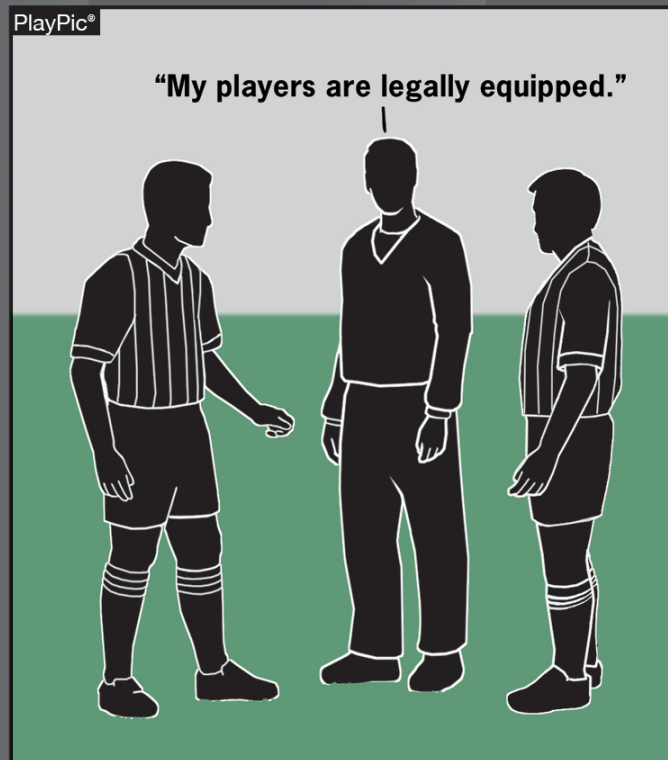


1. **Shirt or jersey, same color as teammates** \*(must be tucked in)
  2. **Shorts, same color as teammates** \*(can be different color than shirt)
  3. **Shinguards**
  4. **Socks or stockings, same as teammates** \*(must cover shinguards)
  5. **Shoes or footwear**
-



# Player Equipment

## Coaches' Responsibilities - Rule 4-3



Coaches, as the adult leaders of the team, must work with their players *and officials* to ensure that player equipment is safe and legal.



# SHIRTS/SOCKS/SHORTS

---



## y Shirts and Socks

- x Home team wears white shirt & socks
  - x Away team dark jerseys & socks
  - x Both socks same color, with a single dominant color
  - x Stay straps or tape on socks must be same color as socks
-

# SHINGUARDS



- y Covered entirely by stockings
- y Professionally manufactured
- y Provide a adequate and reasonable protection
- y Age- and size- appropriate
- y Not altered
- y Worn with the bottom edge no higher than 2 inches above the ankle





# SHINGUARDS



**Effective with the 2008 Fall season, shinguards must meet the NOCSAE specifications.**



# CASTS

---

- ❖ Are allowed if they are covered with at least 1/2" thick closed cell, slow recovery foam





# KNEE BRACES

---

❖ Knee braces are allowed; if they are unaltered with no exposed sharp metal edges

---

# FACE MASK / SPORTS GLASSES

---

- ❖ Face masks are allowed if a medical release, signed by a doctor, is at the game site.
  - ❖ Must mold to the face and have no protrusions
-

# OTHER “EQUIPMENT”

---

- ❖ **Hair control devices, if soft**
  - ❖ **Sweatbands**
  - ❖ **Medical medals/bracelets (taped to body)**
  - ❖ **Hearing aids**
  - ❖ **Mouth protectors**
  - ❖ **Artificial limbs**
-

# EXAMPLES OF

---

# ILLEGAL EQUIPMENT

- ❖ **Jewelry**
  - ❖ **Any projecting, hard material**
  - ❖ **Unyielding head, arm, thigh, or hip pads**
  - ❖ **Casts, splints, body braces unless...**
-



# GOALKEEPER EQUIPMENT

**Goalkeepers** shall wear colors different from:

- y All other **players**
- y **Must be numbered**



# HEAD PROTECTOR - GOALKEEPER

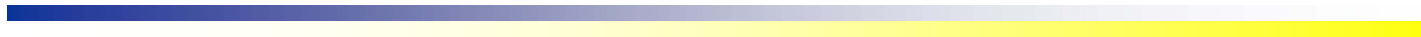
---

- ❖ Goalkeeper's head protector is **allowed** if it is made of closed-cell, slow recovery rubber
  - ❖ Cannot have a bill
  - ❖ Cannot cover the face
  - ❖ Secured by chin strap
-

# SLIDING SHORTS

---

**Allowed if of a similar length and a solid color**



# PENALTY FOR INCORRECT OR IMPROPER EQUIPMENT

---

- y Player is asked to correct the equipment
  - y If not corrected by next stoppage, player must leave the field.
  - y Must wait for referee's permission before re-entering the field.
  - y Referee must be certain the problem has been corrected.
-



# COACHES' RESPONSIBILITIES

---

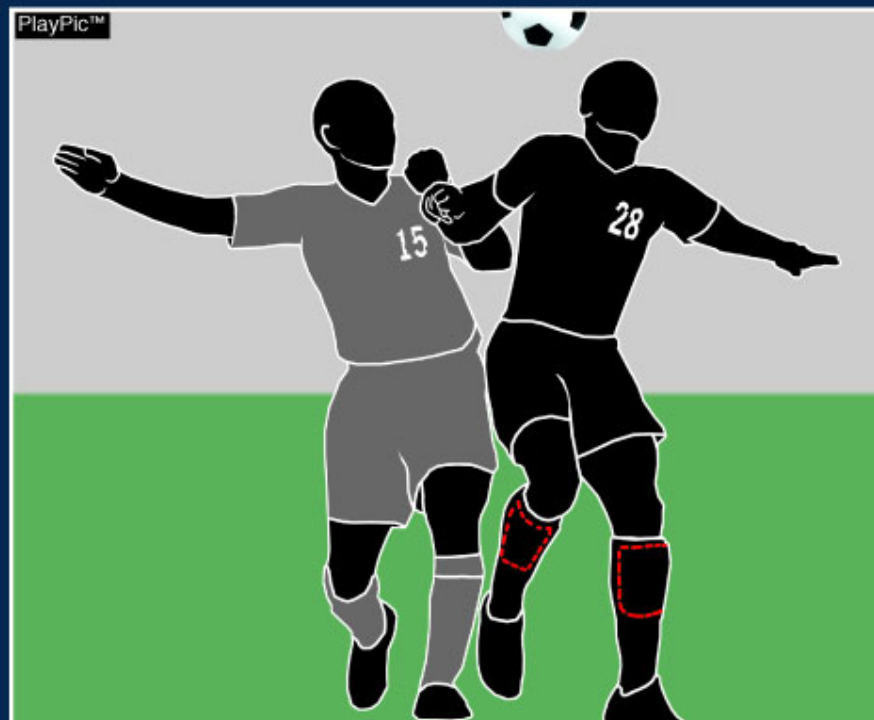
- y **Must ensure that their players are properly and legally equipped**
  - y **Ask them! They must respond YES to your question**
-



## Added Definitions



**Illegally equipped:** a player not wearing equipment required by rule or wearing an item/items not allowed by rule.



**Improperly equipped:** a player wearing legal equipment that is being worn incorrectly or becomes illegal during play.



# Required Equipment, Other Equipment Rule 4-1-1, 4-1-2



## Illegal/Improper Equipment

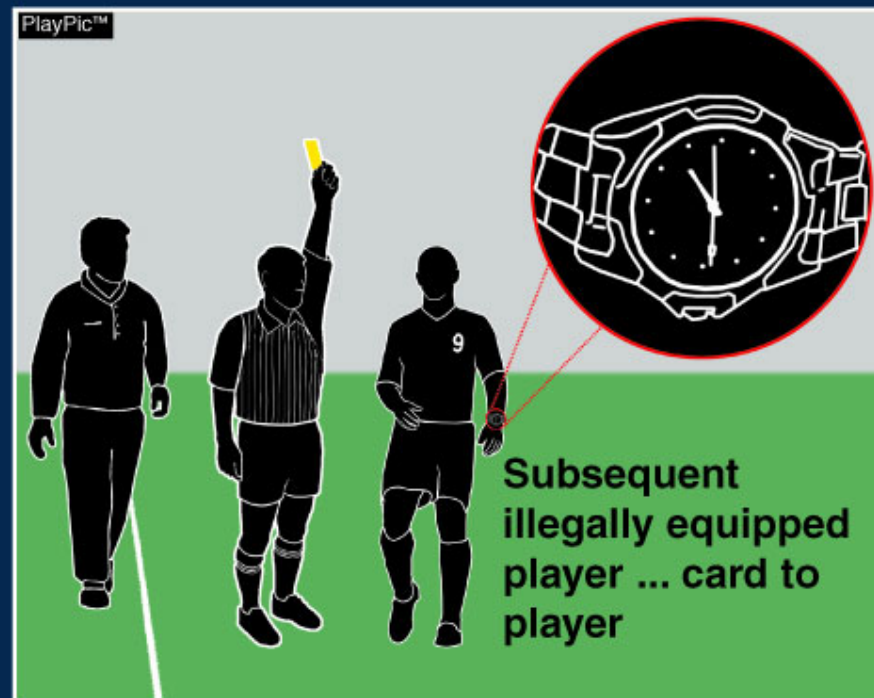
	Illegal	Improper	Rule
Under-sized shinguard	✓		4-1-1
Wrong colored jersey	✓		4.1.1 Sit G (b)
Lost or damaged shoe		✗	
Jewelry	✓		4-2-4
Multicolored undergarments	✓		4.1.1 Sit A (c)
Head or hair adornment		✗	

	Illegal	Improper	Rule
Pierced jewelry	✓		4-2-4
Dislodged knee brace		✗	
Dislodged cover (as on a cast)		✗	
Dislodged shinguard		✗	
Blood on jersey		✗	
Jersey torn by an opponent		✗	



# Coaches' Responsibilities

## Rule 4-3, 12-8-4a



The head coach shall receive the first caution issued (yellow card) for an illegally equipped player. All subsequent (yellow cards) for illegally equipped player(s) shall be issued directly to the player(s) and not to the head coach.